

NetScrawl

v1.0b4

A Picture is worth a Thousand Words...

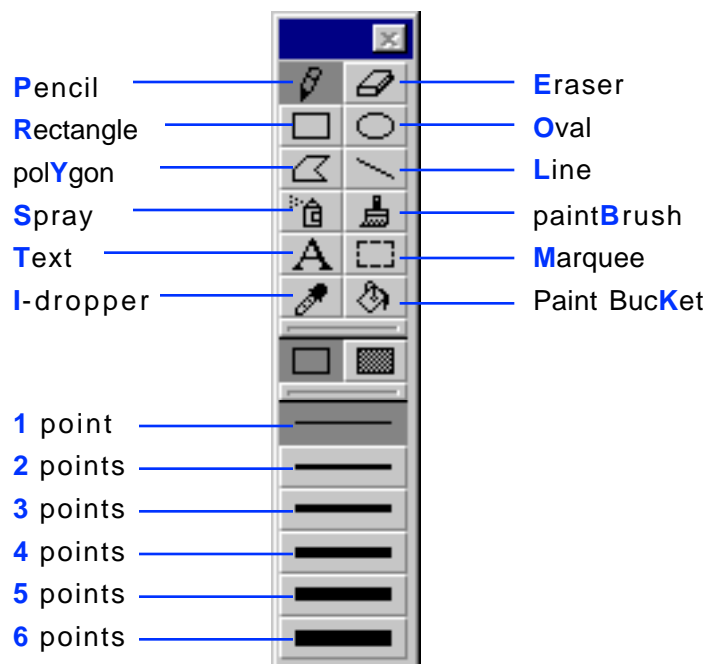
NetScrawl is an easy-to-use collaborative tool for drawing across the Internet or Intranets. It provides the user with the standard set of painting tools, and allows two or more users on a TCP/IP network to merge their ideas, building a single masterpiece over a shared canvas.

System Requirements:

- 486 or better running Windows 95 or Windows NT
- A TCP/IP network connection (Internet or Intranet)
- 2 Megabytes available RAM, 1 Megabyte available hard disk space

Toolbar:

NetScrawl uses a standard set of painting tools as found in many other popular painting programs. Use these tools to draw on the **NetScrawl** window. You can select a color to use with the tools from the 81 provided in the **color palette**.



You can quickly switch between each tool or line width in the toolbar by hitting its associated hot-key (highlighted in blue) when the NetScrawl window is at the front. To switch to the last-used tool, hit the **TAB** key. To switch to the next tool in the toolbar, hit the **SPACE BAR**. You can switch between fill types (open and closed) using the ` (tilde) key.

Pencil Tool:

Use the Pencil Tool to draw freehand on the canvas. This tool is unaffected by the fill types.

Eraser tool:

The eraser tool will erase the work of any of the tools. You can double-click the eraser icon to clear the entire screen. This tool is unaffected by the fill types, line widths, and color palette.

Rectangle and Oval Tools:

These tools will draw rectangles and ovals in the NetScrawl window. If you wish to make a square or circle, hold down the **SHIFT** key while creating the object.

Line Tool:

The Line Tool can be used to draw straight lines between two points. Holding down the **SHIFT** key allows you to create perfect horizontal, vertical, or diagonal lines. This tool is unaffected by the fill types.

Spray Tool:

The Spray Tool allows you to randomly fill a particular section with a color. You can double-click the Spray Tool icon to set the Spray Radius (size of area being filled) and Flow Rate (number of pixels that will cover the area per spray). This tool is unaffected by the fill types and line widths.

Paintbrush Tool:

This tool allows you to paint with specific brush shapes. You can select these by double-clicking this tool's icon. This tool is unaffected by the fill types and line widths.

Text Tool:

This tool allows you to enter some text onto the NetScrawl window. To use it, drag an area on the window in which you wish to enter the text. You can then type in that area, paste, or drag-and-drop other text. Note that you are limited to 255 characters of text. You can double-click this tool's icon to set the text options. This tool is unaffected by the fill types and line widths.

Marquee Tool:

The Marquee Tool allows you to select and move a portion of the picture. Select an area in the NetSrawl window, and you can drag it to a different location. To complete the move, you must click outside of the selected rectangle, or select a different tool. You can also cut or copy a selection to the keyboard using **CONTROL-X** and **CONTROL-C**, or delete a selected area by hitting the **DELETE** key. You can select the entire contents of the NetSrawl window using **CONTROL-A**. This tool is unaffected by the fill types, line widths, and color palette.

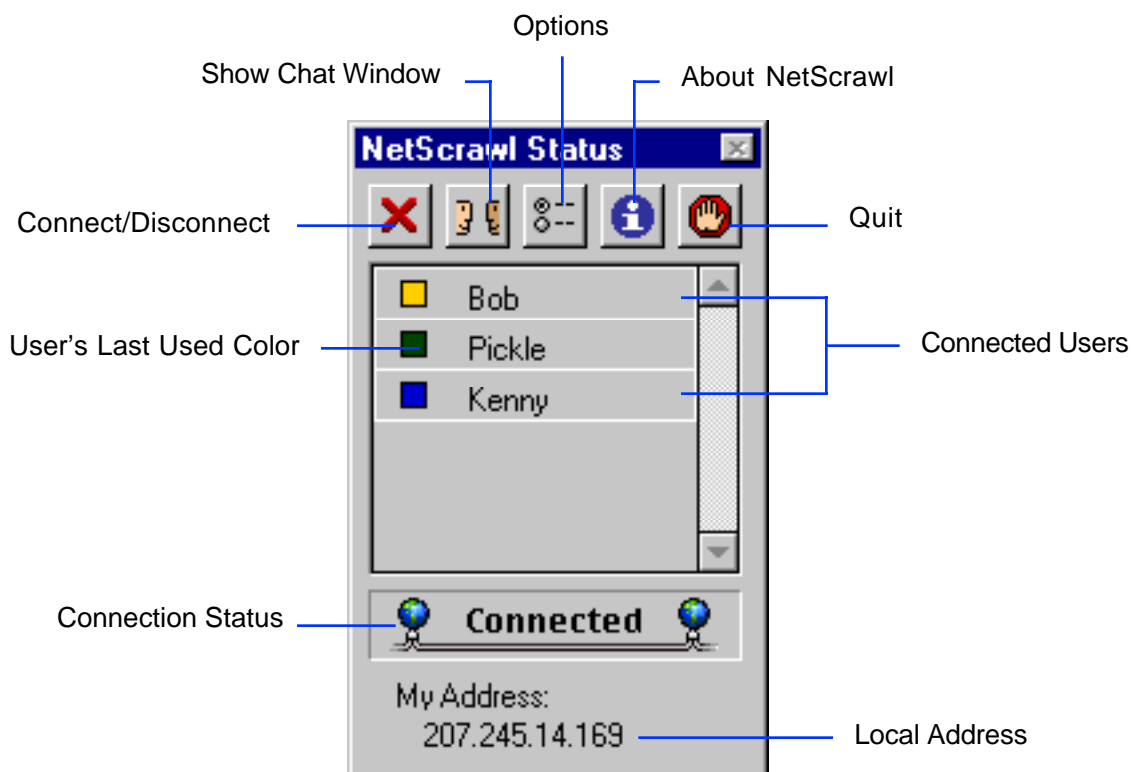
Eyedropper Tool:

The Eyedropper Tool allows you to pick up a color from the NetSrawl window and select it in the color palette. This tool does not modify the image in any way, it simply allows you to locate the color of a particular pixel. The Eyedropper is unaffected by the fill types, line widths, and color palette.

Paint Bucket Tool:

This tool allows you to fill any single-colored region with the selected color. This tool is unaffected by the fill types and line widths.

NetSrawl Status:



The **Connect/Disconnect** button toggles between the two depending on whether there is a connection or not. If there is no connection, it serves as **Connect** and brings up a window asking for an address to connect to. If there is already a connection in place, it will appear as **Disconnect** and will close any open connections.

The **Show Chat Window** button makes the chat window visible and brings it to the front.

The **Options** button opens the **Options Window** allowing you to set different preferences for NetScrawl.

About NetScrawl opens the About window which holds information about the product and is also where you enter your license code once you have paid for the software.

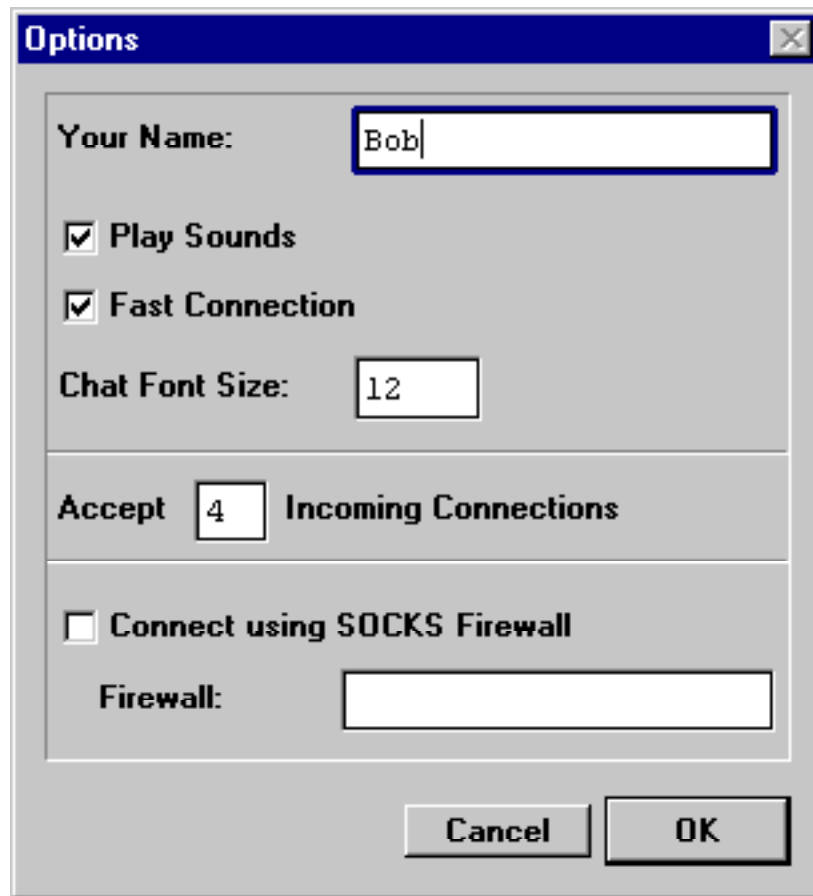
Quit closes any open connections and quits NetScrawl.

The **User List** holds all users currently sharing the NetScrawl canvas. It shows both the users' names as well as the color they last used when drawing in the NetScrawl Window.

The **Connection Status** toggles between **Not Connected**, **Connecting...**, and **Connected**, depending on the connection state.

The **Local Address** area holds your computer's IP address. This is the address you give to others that they would use when wanting to connect to your copy of NetScrawl.

Options Window:



The screenshot shows a Windows-style dialog box titled "Options". It contains several settings:

- Your Name:** A text input field containing "Bob".
- Play Sounds:** A checked checkbox.
- Fast Connection:** A checked checkbox.
- Chat Font Size:** A text input field containing "12".
- Accept** [4] **Incoming Connections:** A numeric input field containing "4".
- Connect using SOCKS Firewall:** An unchecked checkbox.
- Firewall:** An empty text input field.
- Buttons:** "Cancel" and "OK" buttons at the bottom right.

The **Your Name** field is where you enter your name as you want it to appear to others in the User List.

Play Sounds toggles whether or not sounds are played. Sounds are currently not implemented in the Windows 95/NT beta.

Fast Connection regulates the amount of bandwidth used by NetScrawl. If it is checked, data will be sent more frequently to other users which results in a more frequently updated canvas. However, users on slower connections may wish to leave this box unchecked because of the extra bandwidth it may use.

Chat Font Size allows you to enter the size of the text in the Chat Window.

The **Accept () Incoming Connections** lets you determine how many users you allow to connect to yourself. Note that if you initiate a connection to another user, no user can connect to you. You can only accept connections if no open connections were initiated by yourself.

Connect using SOCKS Firewall toggles whether or not NetScrawl attempts to connect through a firewall. If you are connecting through a firewall, you need to enable this option, and enter your firewall address in the **Firewall** field. This feature is currently not implemented in the Windows 95/NT beta.

Chat Window:

Chat is a window in which you can communicate textually with others. Click in the input box (bottom) and you can enter some text. Once you press return (or enter), that text will appear in the chat area (top box) appended to your name.

This window allows you to have conversations with others when you need to quickly explain something that isn't well suited to being drawn. If you want to scroll through the chat, you may click in the chat area and use the scroll bars. While the chat area is active, it will not automatically scroll. Once you click in the input box again, any new chat will cause the chat area to scroll to the bottom again. You can jump between the input box and chat area with the **TAB** key.

If you wish to select custom colors for the chat text, you can do so using the color palette. While the chat window is active, hold down the **ALT** key and select a color to set the text color. Use the **CONTROL** key to select the background color.

The text size of the Chat Window can be set in the Options Window.

Licensing Information:

The evaluation version of NetScrawl will disconnect after 30 minutes of use. You can purchase a license to unlock NetScrawl (disable the evaluation quit) at <http://www.HotlineSW.com>.

LICENSE AGREEMENT:

IMPORTANT: PLEASE READ THIS SOFTWARE LICENSE AGREEMENT CAREFULLY BEFORE USING THE SOFTWARE. BY USING THE SOFTWARE, YOU ARE AGREEING TO BE BOUND BY THE TERMS AND CONDITIONS STATED BELOW. IF YOU DO NOT AGREE WITH THE TERMS OF THIS LICENSE, PROMPTLY CONTACT HOTLINE COMMUNICATIONS LTD. BY E-MAIL AT INFO@HOTLINESW.COM, DESTROY ALL COPIES OF THE SOFTWARE INCLUDING DOCUMENTATION AND REGISTRATION CODES, AND YOUR MONEY WILL BE REFUNDED.

1. Personal License ("License"). HOTLINE COMMUNICATIONS Limited ("HOTLINE COMMUNICATIONS") grants to the Licensee purchasing this copy of the Hotline Client and Server Software for Macintosh PPC/68k a non-exclusive, nontransferable license to use the Hotline software and other software and fonts contained in this package (collectively the "Software") and its documentation for use in accordance with this License. HOTLINE COMMUNICATIONS or HOTLINE COMMUNICATIONS' Licensors retain title to the Software and related documentation although the Licensee owns the media on which the Software and documentation are recorded, if any. This License allows use of the Software and documentation only by the number of Users licensed. "User(s)" means Licensee, if Licensee is an individual purchasing the Software for use at office or home (in which case Licensee's immediate family members residing in the same household shall not be considered additional Users). Subject to the limitations of this License, each authorized User may only use the Software on (i) any central processing unit ("CPU"), workstation or portable which is owned or controlled by Licensee, and (ii) any User-owned CPU, workstation or portable.

2. Restrictions. This License sets forth the terms and conditions governing the use of the Software and documentation. Licensee may not rent, lease or otherwise transfer the Software or its documentation. Licensee may make a limited number of copies of the Software based on the number of licensed Users and a reasonable number of back-up copies. The Software contains copyrighted material, trade secrets and other proprietary material. Licensee must reproduce on all such copies of the Software the copyright notices and any other proprietary legends that were on the original copy of the Software. Licensee shall not, without the prior written permission of HOTLINE COMMUNICATIONS, nor permit anyone else to, decompile, reverse engineer, disassemble or otherwise reduce the Software to a human perceivable form, or to modify, network, rent, lease, loan, distribute, or create derivative works based upon the Software or the documentation in whole or in part. Notwithstanding, if the Software is lawfully acquired outside of the Canada or United States within a jurisdiction which is a member of European Economic Community (EEC) subject to the EEC Council Directive of May 14, 1991, Licensee agrees that within that jurisdiction it shall not, and shall not allow any party on Licensee's behalf, to attempt to reverse engineer or decompile the Software into another computer language, except as expressly and specifically provided in the EEC Council Directive of May 14, 1991. Any and all information obtained during such lawful reverse engineering and/or decompiling activities, including but not limited to, the organization, logic, algorithms and processes of the Software, shall be deemed to be the confidential and proprietary information of HOTLINE COMMUNICATIONS or its Licensors. Licensee shall not make copies of the copyrighted Software documentation without the prior written permission of HOTLINE COMMUNICATIONS provided that for electronic transactions, Licensee may make one (1) hard copy of such documentation for each User.

3. Termination. This License is effective until terminated. Licensee may terminate this License at any time by destroying all copies of the Software and its documentation. This License will terminate immediately without notice from HOTLINE COMMUNICATIONS if Licensee fails to comply with any provision of this License. Upon termination, Licensee must destroy all copies of the Software and its documentation.

4. Export Law Assurances. Licensee agrees and certifies that neither the Software nor any other technical data received from HOTLINE COMMUNICATIONS, nor the direct product thereof, will be exported outside the United States except as authorized and as permitted by the laws and regulations of the United States. If the Software has been rightfully obtained by Licensee outside of the United States, Licensee agrees that Licensee will not re-export the Software nor any other technical data received from HOTLINE COMMUNICATIONS, nor the direct product thereof, except as permitted by the laws and regulations of the United States and the laws and regulations of the jurisdiction in which Licensee obtained the Software. The Software may not be exported to any of the following countries: Cuba, Iran, Iraq, Libya, North Korea, or Syria.

5. Disclaimer of Warranty. Licensee expressly acknowledges and agrees that the use of the Software and its documentation is at Licensee's sole risk. The Software, documentation, and technical support are provided "AS IS" and without warranty of any kind. Information regarding any third party services included in this package is

provided as a convenience only, without warranty by HOTLINE COMMUNICATIONS, and will be governed solely by the terms agreed upon between Licensee and the third party providing such services.

TO THE MAXIMUM EXTENT PERMITTED UNDER APPLICABLE LAWS, HOTLINE COMMUNICATIONS AND HOTLINE COMMUNICATIONS' LICENSOR(S) (FOR THE PURPOSES OF PROVISIONS 5 AND 6, HOTLINE COMMUNICATIONS AND HOTLINE COMMUNICATIONS' LICENSOR(S) SHALL BE COLLECTIVELY REFERRED TO AS HOTLINE COMMUNICATIONS) EXPRESSLY DISCLAIM ALL WARRANTIES, EXPRESS OR IMPLIED, INCLUDING, BUT NOT LIMITED TO THE IMPLIED WARRANTIES OF MERCHANTABILITY, FITNESS FOR A PARTICULAR PURPOSE, AND NONINFRINGEMENT. HOTLINE COMMUNICATIONS DOES NOT WARRANT THAT THE FUNCTIONS CONTAINED IN THE SOFTWARE WILL MEET LICENSEE'S REQUIREMENTS, OR THAT THE OPERATION OF THE SOFTWARE WILL BE UNINTERRUPTED OR ERROR-FREE, OR THAT DEFECTS IN THE SOFTWARE WILL BE CORRECTED. FURTHERMORE, HOTLINE COMMUNICATIONS DOES NOT WARRANT OR MAKE ANY REPRESENTATIONS REGARDING THE USE OR THE RESULTS OF THE USE OF THE SOFTWARE OR ITS DOCUMENTATION IN TERMS OF THEIR CORRECTNESS, ACCURACY, RELIABILITY, OR OTHERWISE. NO ORAL OR WRITTEN INFORMATION OR ADVICE GIVEN BY HOTLINE COMMUNICATIONS OR ITS AUTHORIZED REPRESENTATIVE SHALL CREATE A WARRANTY OR IN ANY WAY INCREASE THE SCOPE OF THIS WARRANTY. SOME JURISDICTIONS DO NOT ALLOW THE EXCLUSION OF IMPLIED WARRANTIES, SO THE ABOVE EXCLUSION MAY NOT APPLY.

6. Limitation of Liability. TO THE MAXIMUM EXTENT PERMITTED UNDER APPLICABLE LAWS, UNDER NO CIRCUMSTANCES, INCLUDING NEGLIGENCE, SHALL HOTLINE COMMUNICATIONS, ITS AFFILIATES OR THEIR DIRECTORS, OFFICERS, EMPLOYEES OR AGENTS BE LIABLE FOR ANY INCIDENTAL, SPECIAL OR CONSEQUENTIAL DAMAGES (INCLUDING DAMAGES FOR LOSS OF BUSINESS PROFITS, BUSINESS INTERRUPTION, LOSS OF BUSINESS INFORMATION AND THE LIKE) ARISING OUT OF THE USE OR INABILITY TO USE THE SOFTWARE OR ITS DOCUMENTATION, EVEN IF HOTLINE COMMUNICATIONS OR ITS AUTHORIZED REPRESENTATIVE HAS BEEN ADVISED OF THE POSSIBILITY OF SUCH DAMAGES. SOME JURISDICTIONS DO NOT ALLOW THE LIMITATION OR EXCLUSION OF LIABILITY FOR INCIDENTAL OR CONSEQUENTIAL DAMAGES SO THE ABOVE LIMITATION OR EXCLUSION MAY NOT APPLY.

In no event shall HOTLINE COMMUNICATIONS's total liability to Licensee for all damages, losses, and causes of action (whether in contract, tort, including negligence, or otherwise) exceed the amount paid by Licensee for the Software and its documentation.

7. No Waiver or Assignment. No delay or failure to take action under this License will constitute a waiver unless expressly waived in writing, signed by a duly authorized representative of HOTLINE COMMUNICATIONS, and no single waiver will constitute a continuing or subsequent waiver. This License may not be assigned, sublicensed or otherwise transferred by Licensee, by operation of law or otherwise, without HOTLINE COMMUNICATIONS's prior written consent, provided that Licensee may assign this License upon written notice to HOTLINE COMMUNICATIONS in instances in which such assignment is to an entity which acquires all or substantially all of the business of Licensee, whether by merger, consolidation, or acquisition of assets.

8. Controlling Law and Severability. This License shall be governed by and construed in accordance with the laws of Canada and the Province of Ontario, as applied to agreements entered into and to be performed entirely within Ontario between Ontario residents. If for any reason a court of competent jurisdiction finds any provision of this License, or portion thereof, to be unenforceable, that provision of the License shall be enforced to the maximum extent permissible so as to effect the intent of the parties, and the remainder of this License shall continue in full force and effect.

9. Entire Agreement. This License constitutes the entire agreement between the parties with respect to the use of the Software and its documentation, and supersedes all prior or contemporaneous understandings or agreements, written or oral, regarding such subject matter. There shall be no contract for purchase or sale of the Software except upon the terms and conditions specified herein. Any additional or different terms or conditions proposed by Licensee or contained in any purchase order are hereby rejected and shall be of no force and effect unless expressly agreed to in writing by HOTLINE COMMUNICATIONS. No amendment to or modification of this License will be binding unless in writing and signed by a duly authorized representative of HOTLINE COMMUNICATIONS.